

RM51424

5U 24-bay High Storage Density and Powerful Computing Server Chassis



Rear View



Optional 6Gb/s mini-SAS backplane



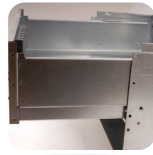
Fan bar with anti-vibration rubbers



Optional 2 x rear 80mm fans

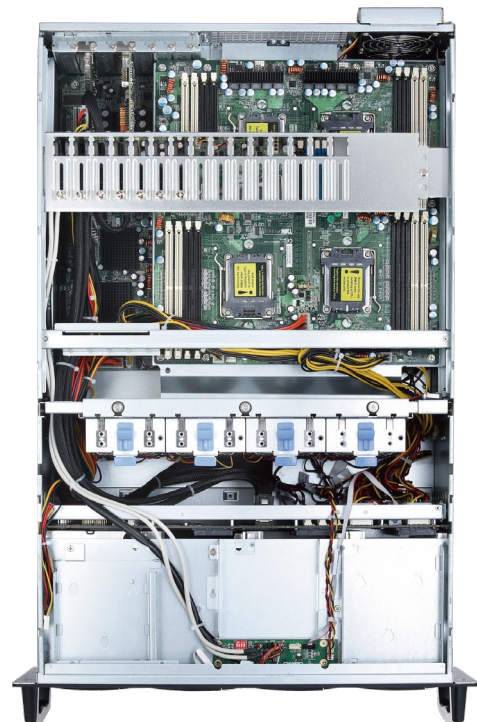


Enforcing card holder



Removable M/B carrier

Inside View



Features & Benefits

- Support up to 24 x 3.5" HDD including 1 x 3.5" internal OS drive bay
- Support 16" x 13" quad CPU M/B
- User friendly design on removable M/B carrier
- Built-in middle 8 x 80mm hot-swap fans with anti-vibration mechanism
- Optional 2 x 80mm rear fans
- Support 6Gb/s mini-SAS backplane
- Built-in 1350W 3+1 redundant PSU

Specification

Model Name	• RM51424
M/B Form Factor	• Extended ATX (12" x 13"), 16.4" x 13"
Dimension (D x W x H)	• 693 x 430 x 220 (mm), 27.2" x 16.9" x 8.8"
Drive Bay	• Exposed: 1 x 3.5", 1 x Slim OOD & FDD, 24 x 3.5" Hot-swap HDD • Internal: 1 x 3.5"
PSU Form Factor	• 3+1 Redundant
Indicator	• 1 x Power Status, 1 x HDD Activity, 2x LAN Activity • 1 x Fan Failure and Overheat
Front Control	• Power On/Off, Alarm Mute, System Reset, 2 x USB 2.0
System Security	• Intrusion Switch
Cooling Fan	• Middle: 8 x 80mm (T=32mm), Hot-swap • Rear: 2 x 80mm (Option)
Slot Opening	• 7 x Full Height and Full Length
HDD Backplane	• 6Gb/s SATA or mini-SAS
Metal Thickness	• 1.2mm
Net Weight	• 46.1kg
Gross Weight	• 55.5kg
Front Bezel	• Option
Cubic Feet	• 10.21
Container Info , (Single Packing)	20': 97, 40': 202

Optional Items

	Order Code	Description
Storage Kits	◆ Note1.	2.5" or 3.5" HDD storage kits
Expander Card	◆ Note2.	6Gb/s SAS expander card
Bracket	84H323210-017	UEK, for M/B I/O opening, w/ Power Control board
	84H331410-025	Chassis Management Board
Backplanes	84H331210-026	12-Bay(3xPCB), SAS/SATAII Backplane w/ bracket
	84H331210-040	12-Port(3xPCB), 6Gb/s SATA w/mounting bracket
Cable	26H113215-030	SFF-8087 to SFF-8087, 600mm
Bezel	84H351910-003	5U, Plastic(Stripe)
	◆ Note1.	SK41203 / SK51101 / SK51102 / SK51201
	◆ Note2.	CK22804 / CK23601

※ PSU ※ M/B Support ※ I/O Gasket ※ Air Duct ※ (Detailed in CHENBRO websites)

Order Information

Order Code	M/B	Backplane	Cooling Fan(mm)	PCI Slot	PSU	Slide Rail
RM51424M2-RD50G	16"x13"	3.5", 6Gb/s mini-SAS	8x8032	7 x FF	1350W, Redundant	Included