

SK41101 Converts 1 x 5.25" bay to 1 x 3.5" bay

Specification

Order Code	• SK41101
Dimension (D x W x H)	• 161.8 x 146 x 41.6 (mm) 6.37" x 5.8" x 1.64"
Drive Bay	• Internal 3.5" HDD/FDD x 1
Indicator	• N / A
Front Control	• N / A
Cooling Fan	• N / A
Material	• SECC
Net Weight	• 0.26 Kg
Backplane	• N / A
Connector (To Drive)	• N / A
Connector (To Host)	• N / A
Package Contents	• 1 x SK41101



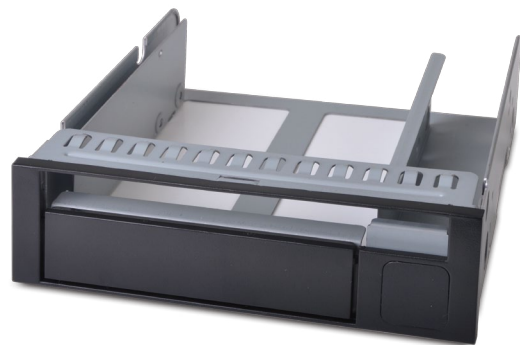
Compatible Chassis ** = With mounting kit or cage

■ RM21600 RM21706 RM22300 RM24100 RM24200 RM31300 RM31408 RM41300 RM41416B RM42200 RM42300
▲ SR105 SR107 SR112 SR209
● PC310 PC311 PC313 PC617 PC710 PC711 PC713
◆ SK51201

SK41202 Converts 1 x 5.25" bay to slim ODD and 3.5" bay

Specification

Order Code	• SK41202
Dimension (D x W x H)	• 161.8 x 146 x 42.6 (mm) 6.37" x 5.8" x 1.68"
Drive Bay	• Slim ODD x 1 Internal 3.5" HDD/FDD x 1
Indicator	• N / A
Front Control	• N / A
Cooling Fan	• N / A
Material	• SECC
Net Weight	• 0.27 Kg
Backplane	• N / A
Connector (To Drive)	• N / A
Connector (To Host)	• N / A
Package Contents	• 1 x SK41202



Compatible Chassis ** = With mounting kit or cage

■ RM21600 RM21706 RM22300 RM24100 RM24200 RM31300 RM31408 RM41300 RM41416B RM42200 RM42300
▲ SR105 SR107 SR112 SR209
● PC310 PC311 PC313 PC617 PC710 PC711 PC713
◆ SK51102 SK51201

SK41203 Converts 1 x 3.5" to 1 x 2.5" internal bay

Specification

Order Code	• SK41203
Dimension (D x W x H)	• 131.2 x 101.6 x 25.4 (mm) 5.3" x 4" x 1"
Drive Bay	• 1 x 2.5" SAS or 2 x 2.5" SATA HDD
Material	• SECC
Net Weight	• 0.07 Kg
Package Contents	• 1 x SK41203



Compatible Chassis ** = With mounting kit or cage

■ RM21600 RM21706 RM31300 RM31408 RM41300 RM41416B RM42200 RM42300 RM51424
▲ SR107 SR112
● PC310 PC311 PC313 PC617 PC710 PC711 PC713 PC719 PC722